



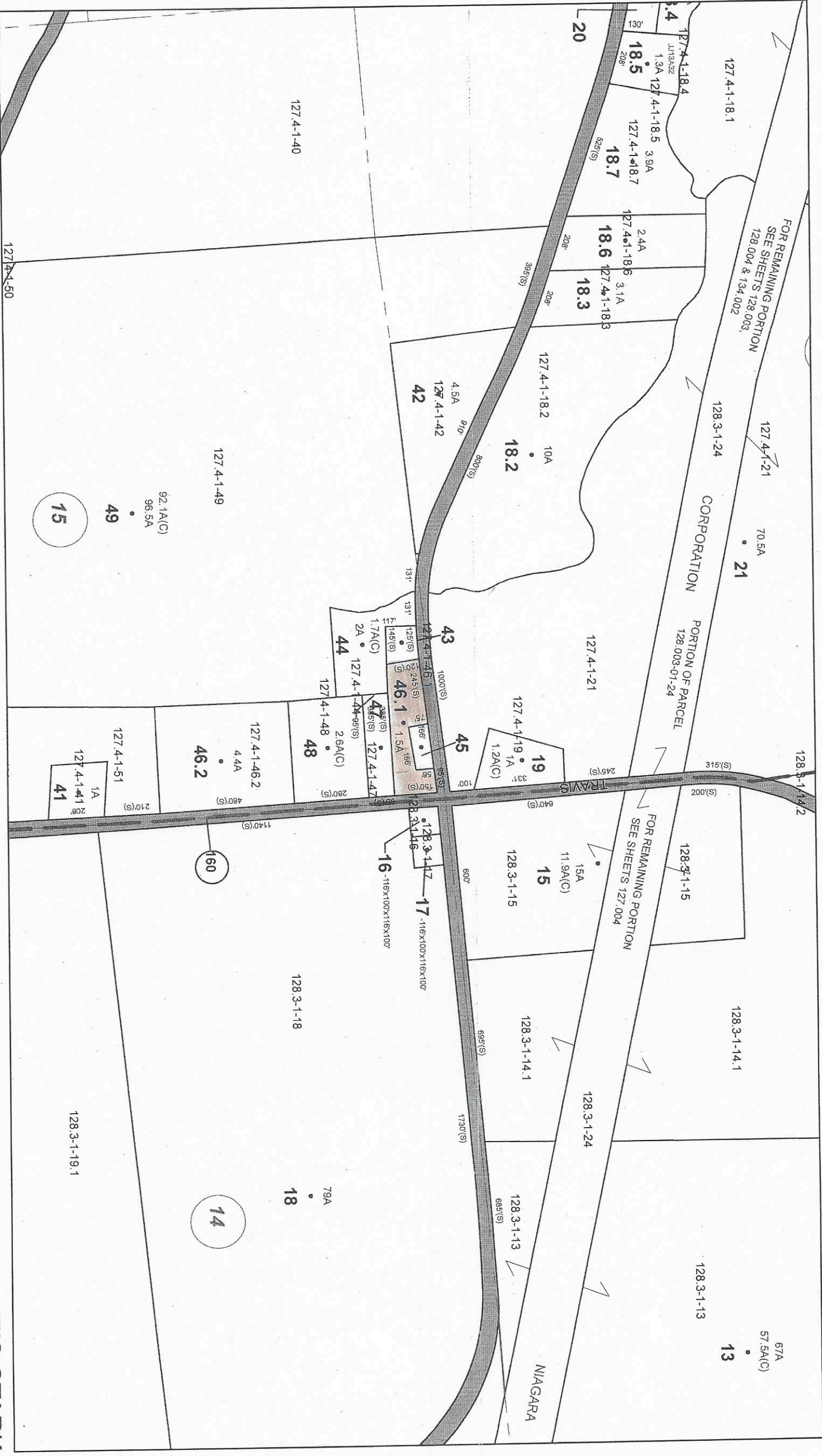
1 inch = 400 feet

Item # 60



New York

**T/O STARK
127.4-1-46.1**



127.4-1-18.1

127.4-1-18.4
1.3A 127.4-1-18.5 3.9A
127.4-1-18.7
18.5
18.7
208°

2.4A
127.4-1-18.6 3.1A
127.4-1-18.3
18.6
18.3
208°

127.4-1-18.2 10A
18.2
208°

4.5A
127.4-1-42
42
910
800(S)

127.4-1-49
92.1A(C)
96.5A
49
15

127.4-1-46.1
1.7A(C)
2A
44
127.4-1-48
2.6A(C)
48
280(S)

127.4-1-19
1A
19
331
1.2A(C)

127.4-1-51
1A
127.4-1-41
41
208°
210(S)

127.4-1-46.2
4.4A
46.2
480(S)

128.3-1-17
16
17
166x100x166x100
166x100x166x100

128.3-1-15
15A
15
11.9A(C)

128.3-1-18
79A
18

FOR REMAINING PORTION
SEE SHEETS 127.004

128.3-1-14.1
128.3-1-24

128.3-1-19.1
14

128.3-1-13
67A
57.5A(C)
13

NIAGARA